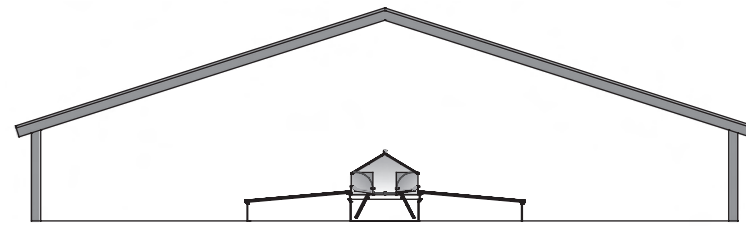


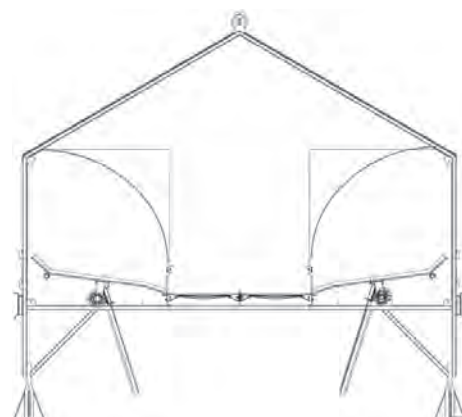
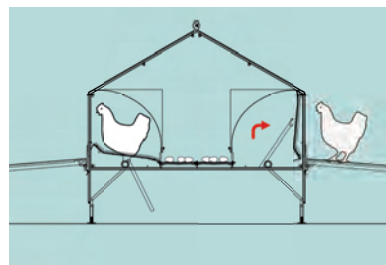
Grando Nest

Automatic nest with moveable floor



Standard Specifications

	Double 1 tier nest (4 nest holes, 1 belt)	Double 1 tier nest (4 nest holes, 2 belts)
Nest surface	2,22 m²/section	2,22 m²/section
Density	190-225 birds/section	190-225 birds/section
Dimensions - Section length - Width	2300 mm 1356 mm	2300 mm 1614 mm
Egg belt width	1 x 250 mm	2 x 250 mm
Egg belt speed	variable 0-4,7 m/min.	variable 0-4,7 m/min.



Double
1 tier nest
2 belts



Double
1 tier nest
1 belt

© 2010.EN.01 All rights reserved by Vencomatic

Grando Nest

Automatic nest with moveable floor



The Grando Nest is an automatic nest with a moveable floor. The moveable floor pushes out birds after period of lay. This prevents broodiness creating a clean nest pad resulting in clean, top quality eggs. The perforated egg belt is located in the middle of the nest. The welfare friendly design and the materials used create an optimum environment for the hen to lay her eggs.



Ideal nest for breeders

Many years of experience world-wide
Comfortable and attractive for the hen to lay her egg
Easily accessible for the birds
High density per nest due to large nest surface
Minimum number of floor eggs

Clean and hygienic eggs

Self-cleaning nest pad thanks to moveable floor
Open structured Vencomat floor gives clean eggs
Good egg quality through gentle egg transfer
Egg belt with square holes for minimum contact
Good hatching or table egg quality



Durable and low maintenance

Solid rack and pinion mechanism for nest closing
Easy operation of the nest systems
Durable and welfare friendly materials
Vital parts are easy to reach for easy maintenance
Fast and easy cleaning of the nest



Grando Nest

Automatic nest with moveable floor

- Easy installation and quick placement of slat bar
- Removable front cover for perfect cleaning of the nest



- Easy and quick construction of the nest
- Vital parts are easy to reach for easy maintenance and cleaning

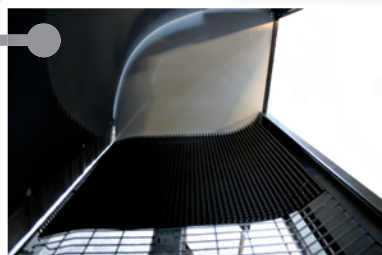
- One or two egg belt configuration of the nest
- Square holes for minimum contact
- Black backwalls give less light in the nest
- Optional ventilation holes in backwall



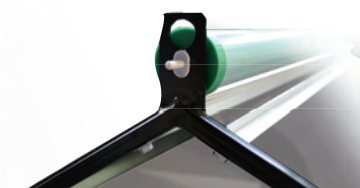
- Solid and clean frame for easy and quick construction



- Deep nest box for maximum bird density
- Polypropylene sidewalls
- Simple design of nest floor



- Easy to install anti-perch roller-bar
- Roller-bar construction also suitable for winching



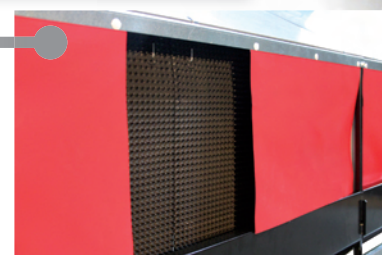
- Vencomatic rack and pinion system for nest closing
- Durable and low maintenance
- Gentle bird removal
- Silent movement without vibration



- Vencomatic time clock
- Easy to operate



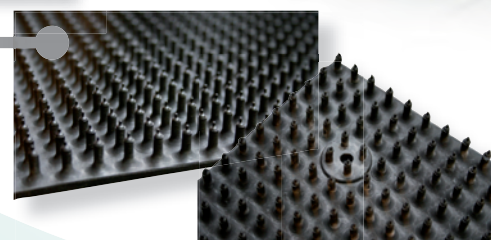
- Closing floors gives perfect egg quality
- Vital parts easy to reach for easy maintenance



- Egg collecting table for easy manual collection
- Egg belt fixed or variable speed
- Optional connection to egg conveyor



- Robust Vencomat in colour black
- Comfortable for the birds
- Two mats per nest section, easy installation
- Wear-out protection at the holes



- Egg belt return station with egg belt brush
- Perforated egg belt provides hygienic collection and steady temperature

